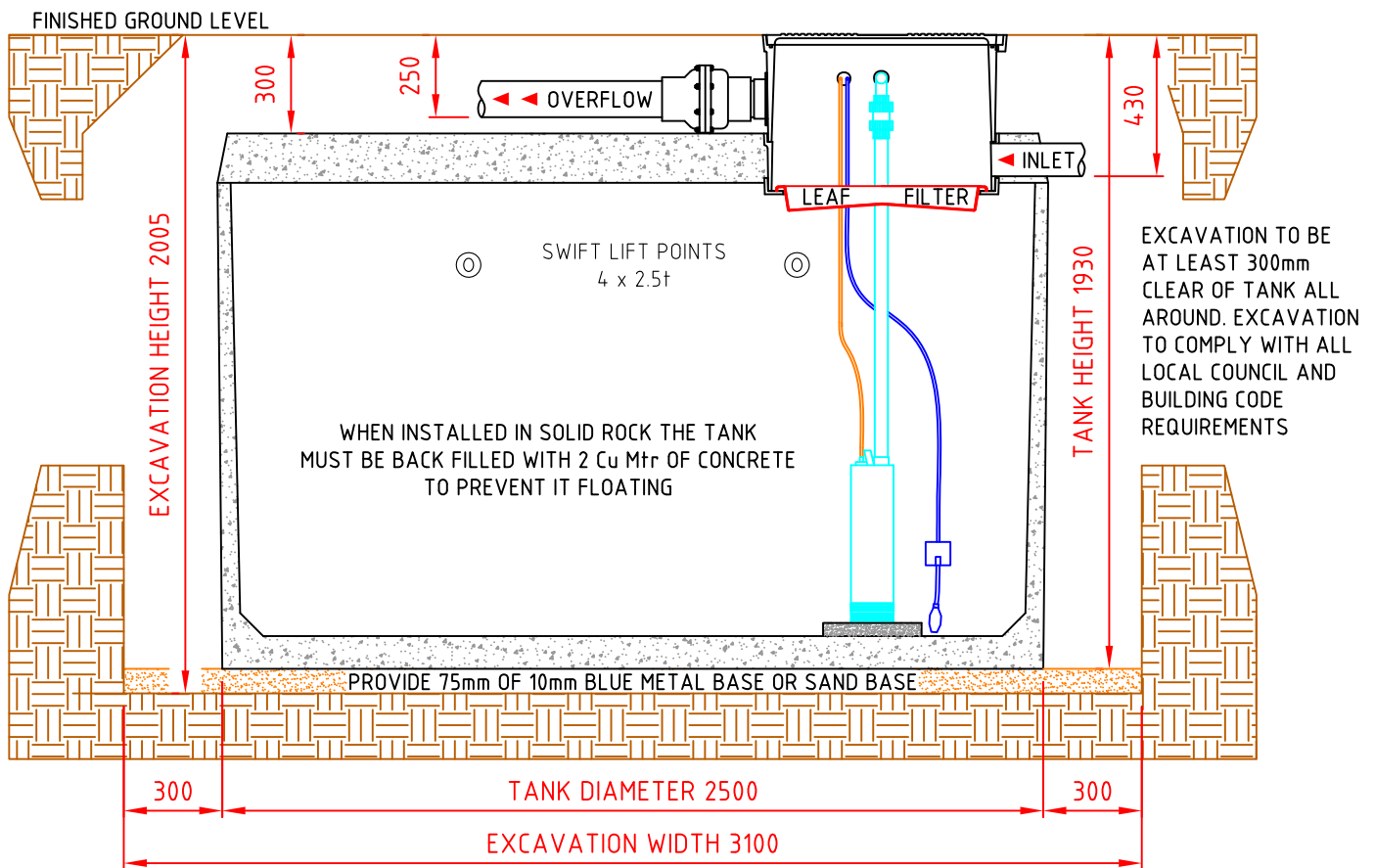
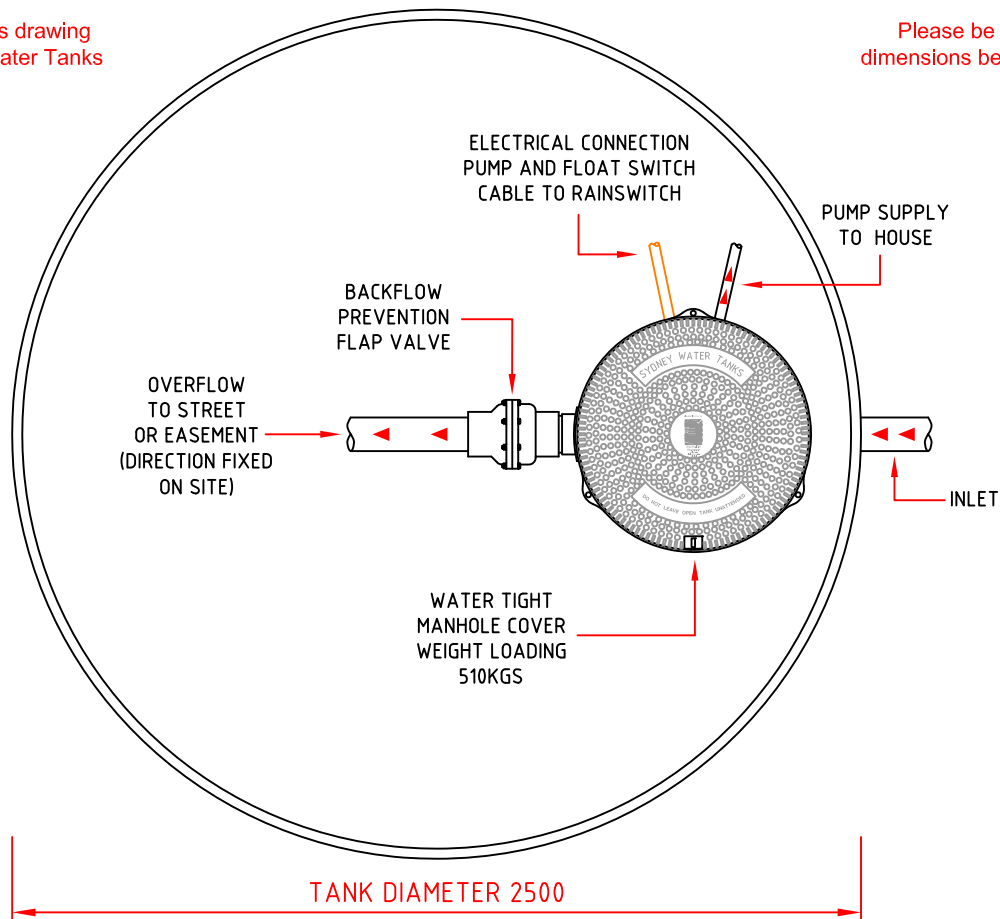


For DWG/CAD file of this drawing please contact Sydney Water Tanks

Please be aware of all dimensions before excavating



DIAGRAMMATIC SECTION DETAIL

Sydney WaterTanks
superior engineering

1-5 Anzac Avenue, Smeaton Grange Road
Smeaton Grange NSW 2567
Phone: (02) 4629 6688 Fax: (02) 4629 6677
Email: sales@sydneywatertanks.com.au
Web Site: www.sydneywatertanks.com.au

THE TANK IS MANUFACTURED BY BIOSEPTIC PTY LTD AND IT IS ACCREDITED TO AS/NZS 1546.1-2008

A4 Size Sheet
© SYDNEY WATER TANKS, 2014

Scale: 1 : 25
Scale: 1 of 1

ISSUE G
JUN 14

Concrete fc:	40Mpa @ 28 days
PVC fittings:	@100mm
Mass:	4.8 tonnes
Lid:	F82 mesh
Base and Walls:	Fibre steel

6,100Ltr Concrete Water Tank
Model: 6,100/300